



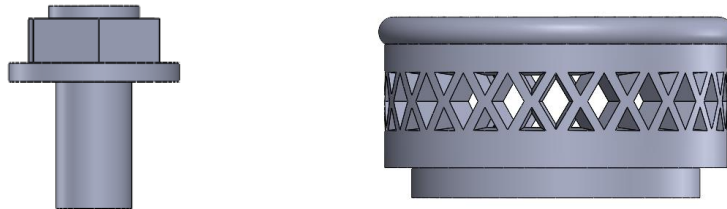
**Honda RC213V '14 - (Tamiya 14130) – chain**

**Catalog no.: FSM P005**

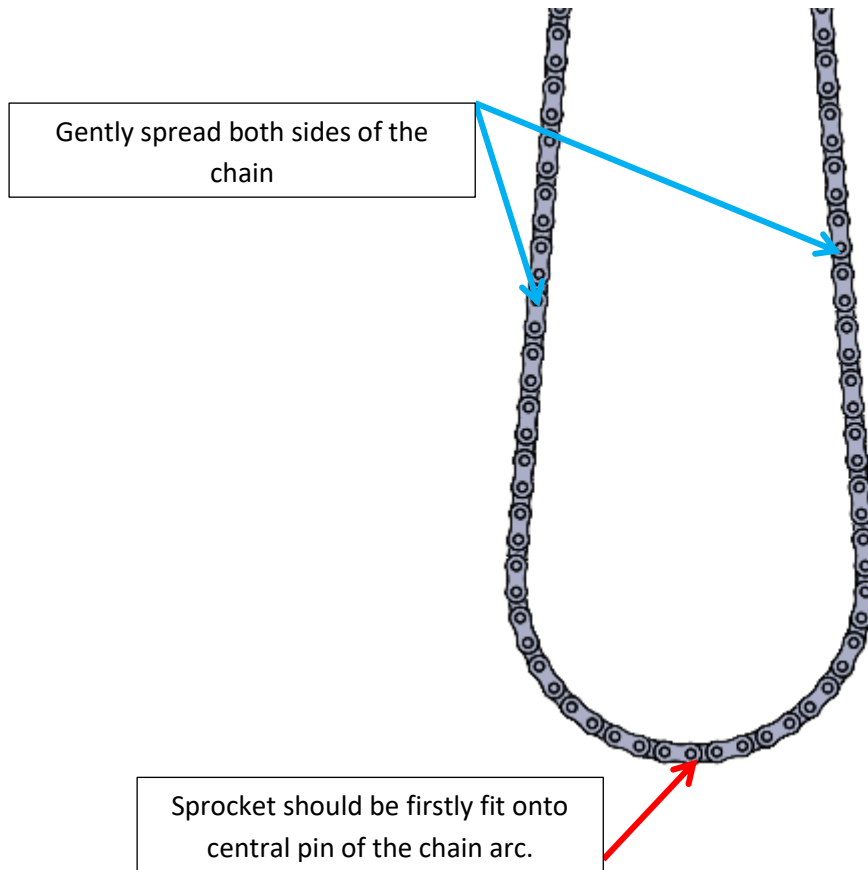
## Installation guide

1. Remove all supports holding the chain. Use sharp cutters like Tamiya 74035. Do not break off the chain. See the video on supports removal at [www.falconscalemodels.com](http://www.falconscalemodels.com) in the manual section.
2. Remove all the supports holding screws having in mind:  
**REMARK 1:** Rear sprocket screws should have an installation pin.

Properly cut off parts:



3. Remove all the supports holding sprockets and smooth the back surface of the sprockets.
4. Using 0.6 – 0.65mm drill correct holes in both sprockets in which the screws will be installed.
5. After painting install screws in the sprockets using CA glue or Micro Kristal Klear.  
**REMARK 1:** If the screws are too long shorten them after installation cutting off unneeded fragment from the back side of the sprocket.  
**REMARK 2:** It is suggested to use Micro Kristal Klear glue as to excess can be removed with warm water without damaging painted surface.
6. Install the sprockets inside the chain.  
See the video on sprocket installation at [www.falconscalemodels.com](http://www.falconscalemodels.com) in the manual section.  
Gently widen the chain and insert the sprocket onto the central pints of the chain arc.  
In the next step, lightly raise the chain and pull it in the direction of the opposite sprocket to place all the pins on the sprocket. Secure the sprockets position using CA glue or Micro Kristal Klear having in mind remark 2 from step 5.
7. Split the chain using base kit part as a reference. Cut links one by one. Do not cut all links at once as you can damage the chain.
8. Use mesh exhaust tip to replace the ones from the base kit.



Proper position of the sprocket inside the chain.

